



BA Lifesciences GmbH
Rudolf-Wissell-Str. 28
37079 Goettingen
Germany
Tel.: +49 (0) 551-5 06 72-0
E-mail: info@iba-lifesciences.com
www.iba-lifesciences.com

Data Sheet

pENTRY-IBA51

Cat. No.: 5-4091-001

Version: 3.0
Revision Date: 26.07.2021

Description	StarGate® Entry Vector to insert the PCR product of a certain gene of interest to generate a Donor Vector.
Resistance	Kanamycin
Form	5 µg, dissolved in 20 µl TE buffer, pH 8.0: 10 mM Tris/HCl, 1 mM EDTA
Concentration	250 ng/µl
Stability	12 months after shipping
Storage	recommended: 2-8 °C for frequent usage, -20 °C for long-term storage
Shipping	room temperature
Hazards	Product is not classified as hazardous according to (EC) No 1272/2008 [CLP]. A Material Safety Data Sheet is provided.

For research use only

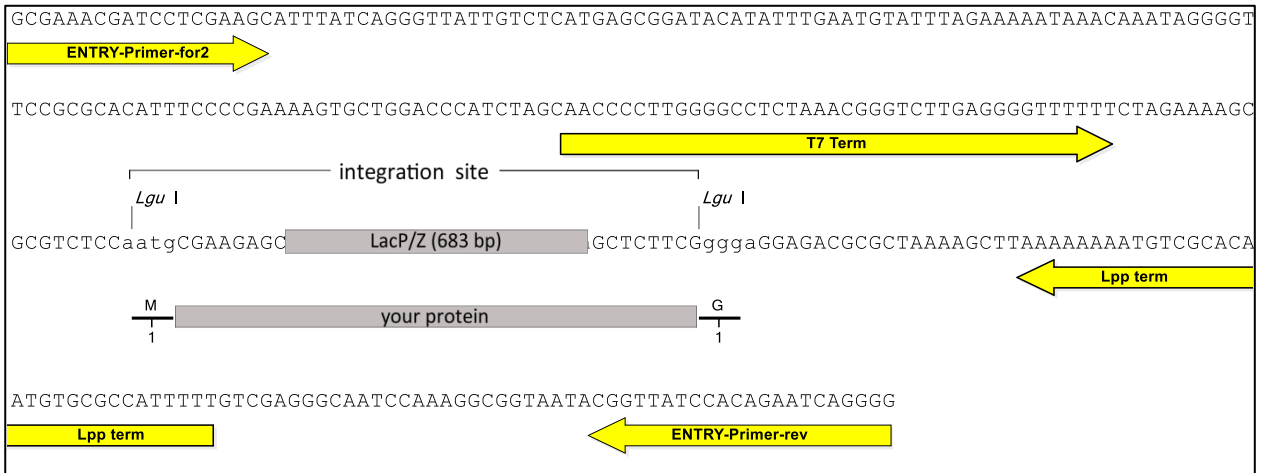
Trademark information

The owners of trademarks marked by “®” or “TM” are identified at <http://www.iba-lifesciences.com/patents.html>. Registered names, trademarks, etc. used in this document, even when not specifically marked as such, are not to be considered unprotected by law.

Important licensing information

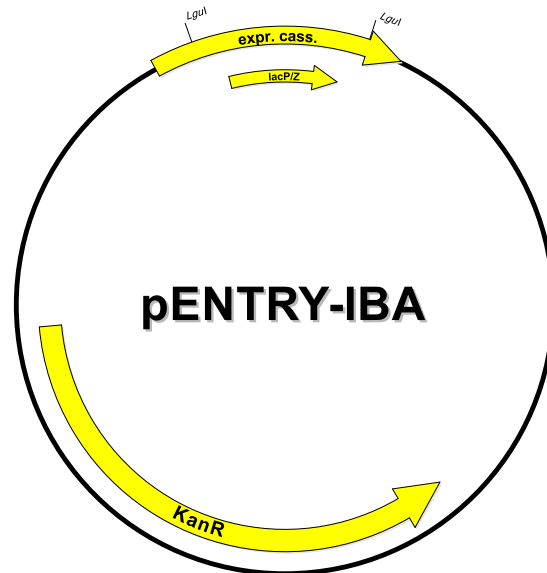
This product is covered by intellectual property (IP) rights and on completion of the sale IBA Lifesciences grants respective Limited Use Label Licenses to purchaser. IP rights and Limited Use Label Licenses for said technology are further described and identified at <http://www.iba-lifesciences.com/patents.html> or upon inquiry at info@iba-lifesciences.com or at IBA Lifesciences GmbH, Rudolf-Wissell-Str. 28, 37079 Goettingen, Germany. By use of this product the purchaser accepts the terms and conditions of all applicable Limited Use Label Licenses.

Cloning site of pENTRY-IBA51



LacP/Z cassette = contains LacZ alpha fragment under control of a separate promoter, which allows alpha complementation of *LacZ* mutations such as *LacZΔM15* as in *E. coli* DH5α or TOP10.

your protein = after StarGate cloning using *LguI* your gene of interest will be located here



Features	from bp	to bp	Sequencing primer
Kanamycin resistance gene	1564	770	ENTRY-Primer-for2
forward primer binding site	1565	1583	
T7 terminator	1695	1734	5' - GCGAAACGATCCTCGAAGC -3'
LacP/Z	1983	2384	ENTRY-Primer-rev
Lpp terminator	2476	2507	
reverse primer binding site	2535	2556	5' - CCCCTGATTCTGTGGATAACCG -3'
total vector length		2556	